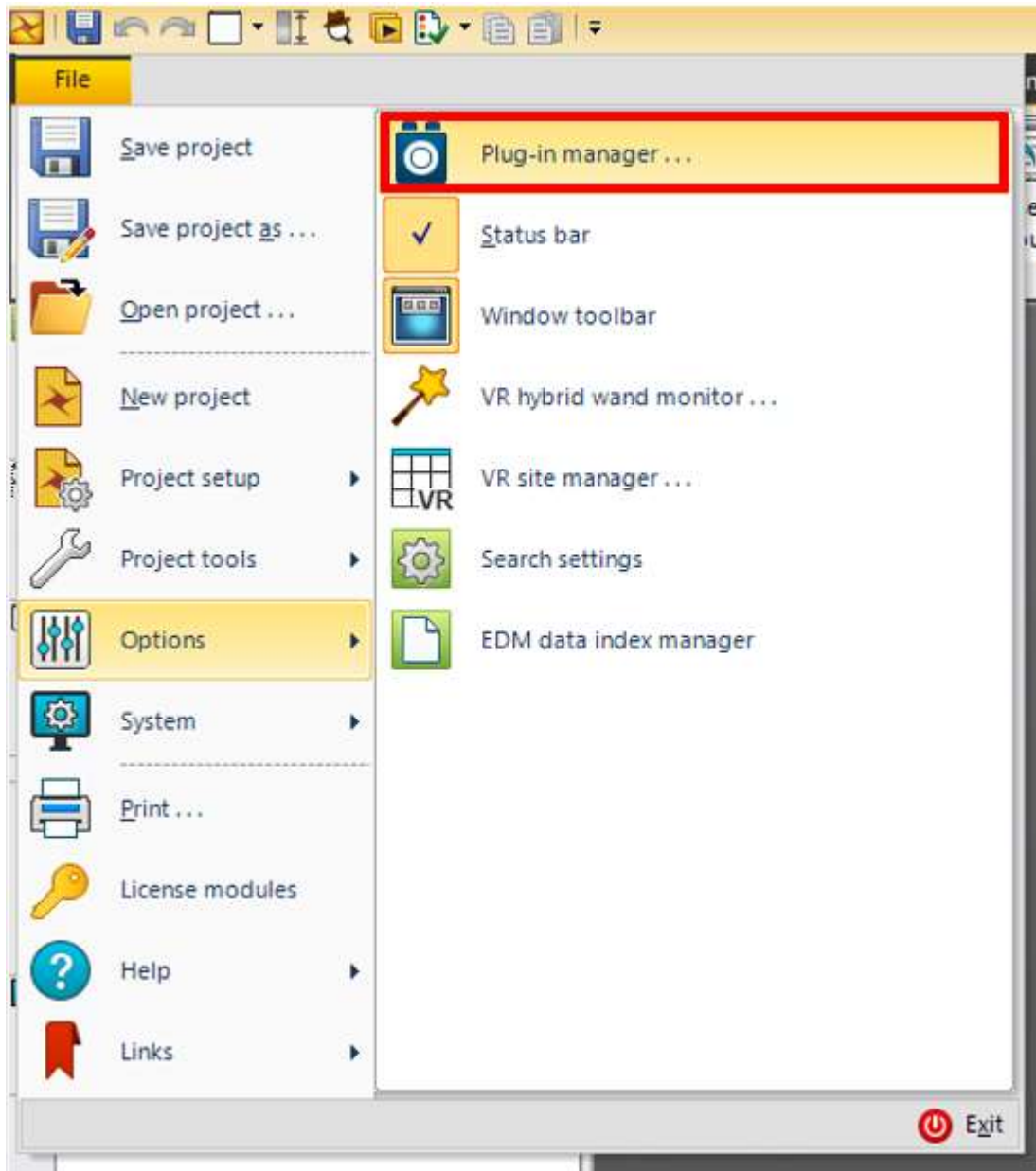
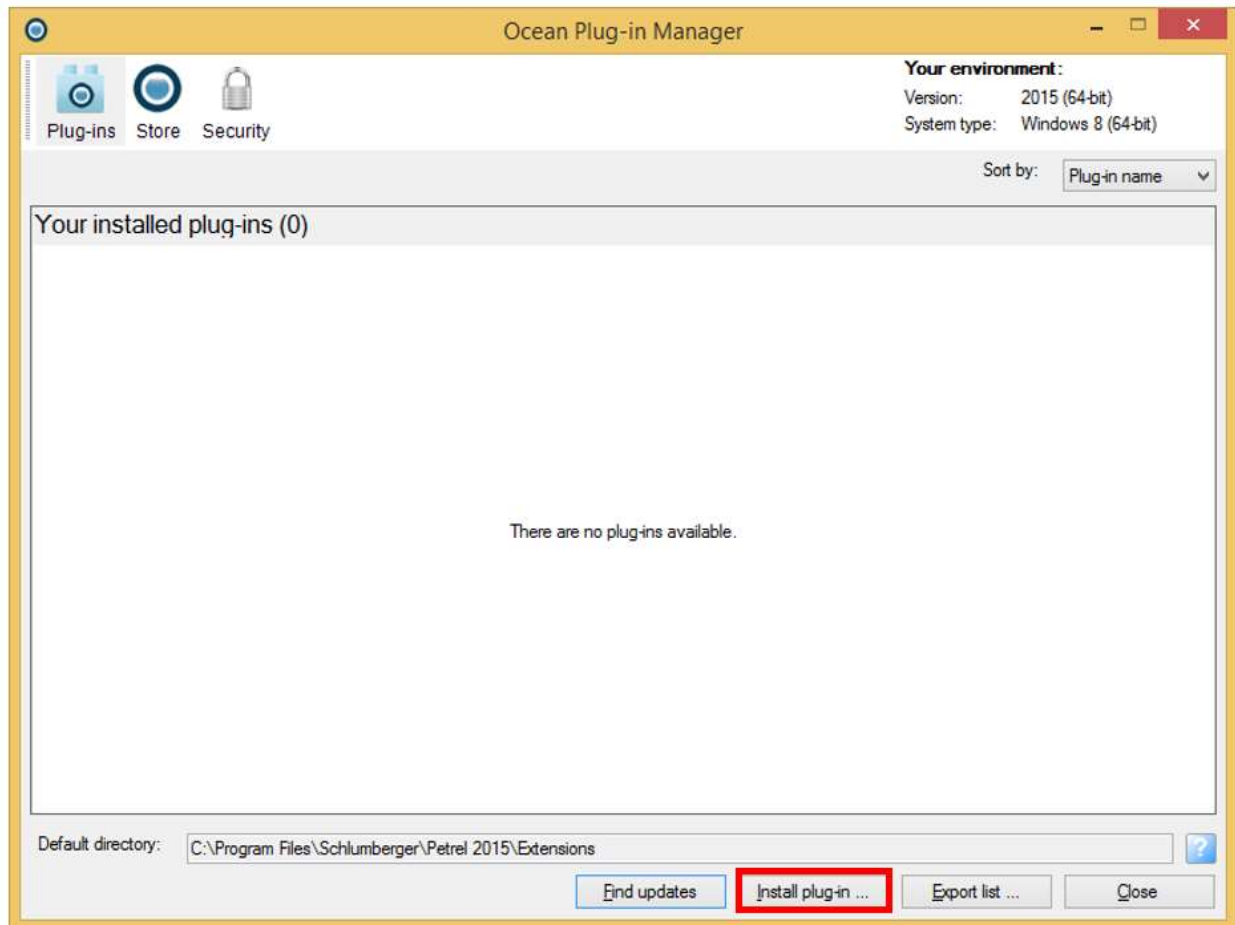


enerSOFT wellTOOLS Plugin Installation

With Petrel open, go to File > Options > Plug-in manager...



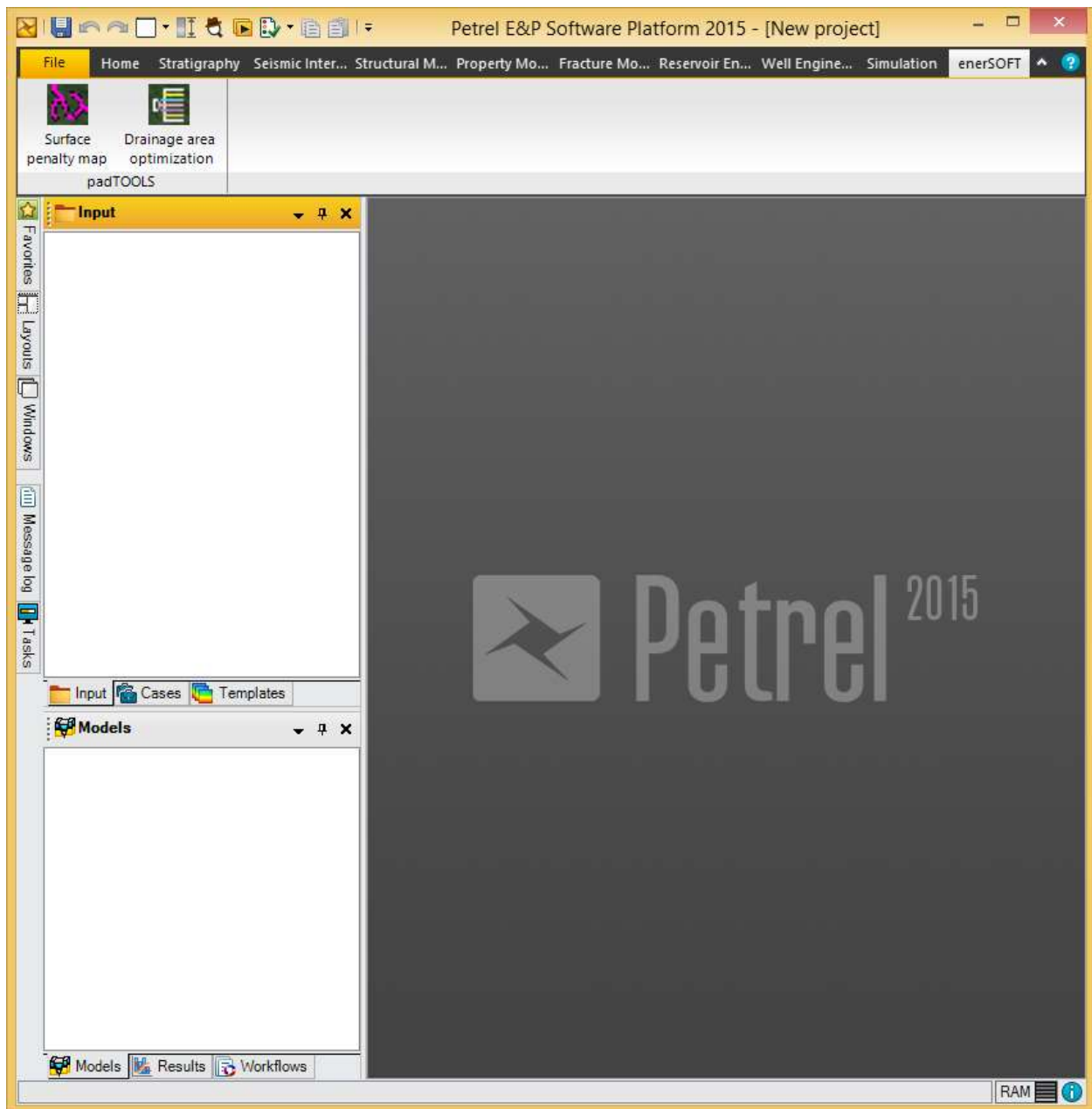
In the Plug-in Manager, click “Install plugin-in...”. Navigate to the location of the provided *.pip file and click “Open”.



Verify that the plugin installed correctly. Beside the exclamation mark in the yellow circle should read: "The selected plug-in has been installed in your plug-in default directory. Changes will take effect the next time you start Petrel. Please restart Petrel."



After restarting Petrel, the “enerSOFt” tab should be visible in the Petrel ribbon:



The plugins are also accessible in the Petrel 'Processes' pane:

